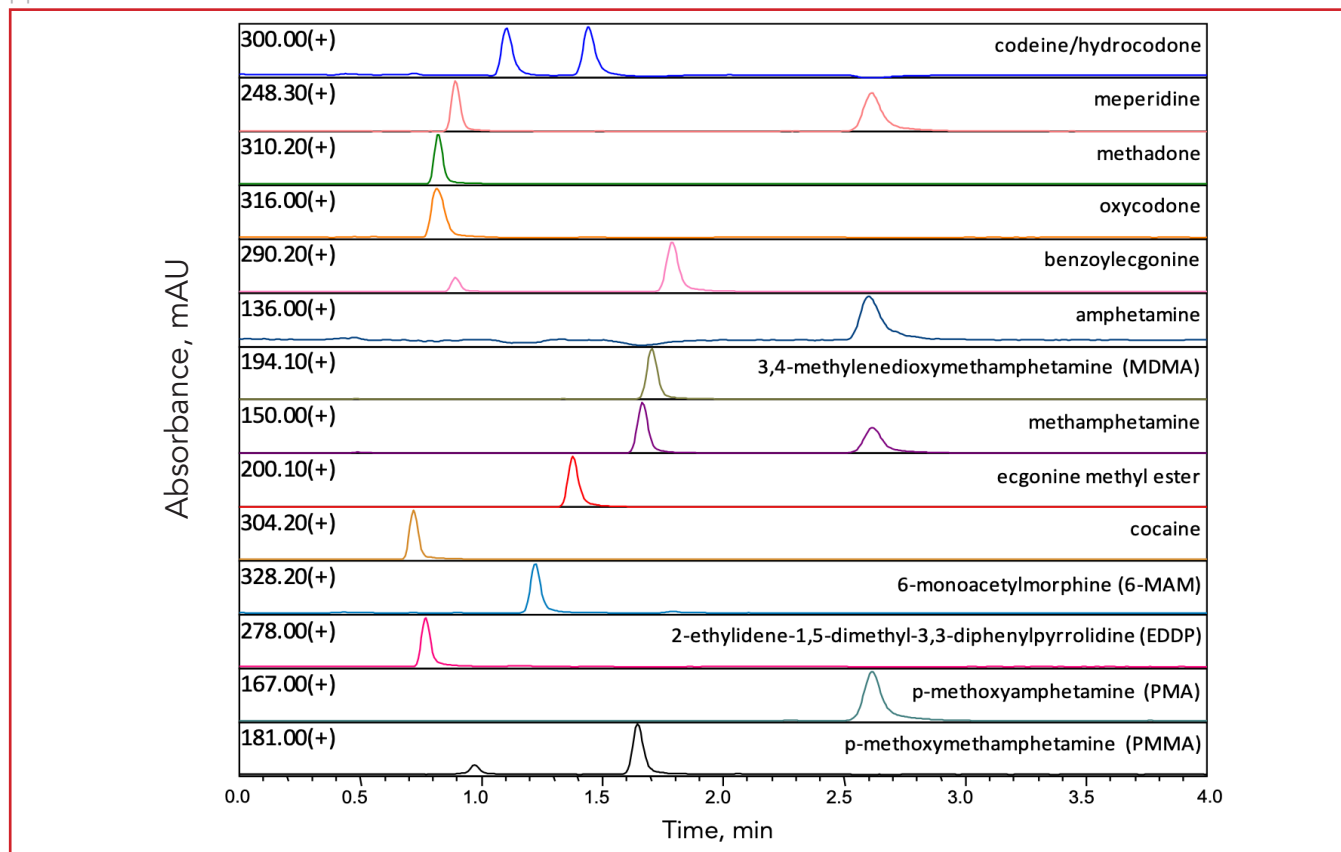




LC-MS Separation of Drugs of Abuse and Metabolites on HALO[®] Penta-HILIC

Application Note 123-DA



TEST CONDITIONS:

Column: HALO 90 Å Penta-HILIC, 2.7 μm,
2.1 x 100 mm

Part Number: 92812-605

Mobile Phase:

A: 5 mM Ammonium formate, pH 3.0

B: Acetonitrile

Isocratic: Pre-mixed 5/95 - A/B

Flow Rate: 0.5 mL/min

Pressure: 149 bar

Temperature: 60 °C

Detection: Selected Ion Monitoring as indicated

Injection Volume: 1.0 μL

Sample Solvent: 90/10 ACN/water

MS Parameters: Positive ion mode, 2 kV, 400 °C heat
block 225 °C capillary

LC-MS System: Shimadzu Nexera and LCMS-2020
(single quadrupole MS)

This mixture of drugs of abuse and metabolites is quickly identified using a HALO[®] Penta-HILIC column and selected ion monitoring (SIM) for improved sensitivity. Adapted from J. Pharm. Anal. 2013; 3 (5): 303-311.

