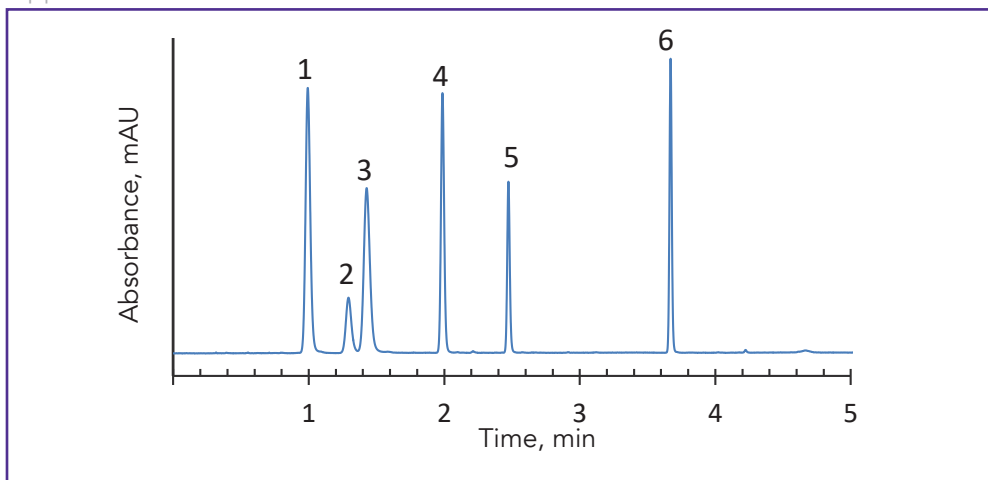




Separation of Resveratrols and Related Compounds on HALO® C18, 5 µm

Application Note 133-P



PEAK IDENTITIES:

1. trans-Polydatin
2. Piceatannol
3. trans-Oxyresveratrol
4. trans-Resveratrol
5. cis-Resveratrol
6. Pterostilbene

These naturally occurring compounds can be found in grapes and grape vines and other plants and are claimed to have health benefits. Resveratrol and these related compounds can be analyzed in less than 5 minutes using a HALO® C18, 5 µm column.

TEST CONDITIONS:

Column: HALO 90 Å C18, 5.0 µm,
3.0 x 100 mm

Part Number: 95813-602

Mobile Phase:

A: Water

B: Methanol

Gradient:	Time (min)	% B
	0.0	32
	1.0	32
	4.0	90
	5.0	90

Flow Rate: 1.2 mL/min

Pressure: 245 bar

Temperature: 35 °C

Detection: UV 290 nm, VWD

Injection Volume: 1.0 µL

Sample Solvent: 50/50 acetonitrile/water

Response Time: 0.02 sec

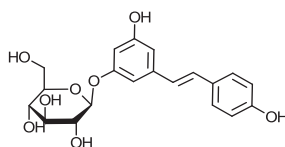
Data Rate: 25 Hz

Flow Cell: 2.5 µL semi-micro

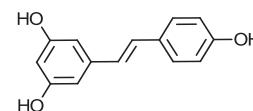
LC System: Shimadzu Prominence UFLC XR

Extra Column Volume: ~14 µL

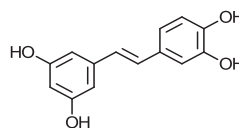
STRUCTURES:



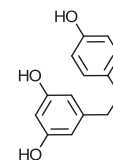
trans-Polydatin



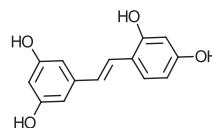
trans-Resveratrol



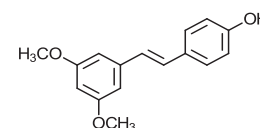
Piceatannol



cis-Resveratrol



trans-Oxyresveratrol



Pterostilbene

