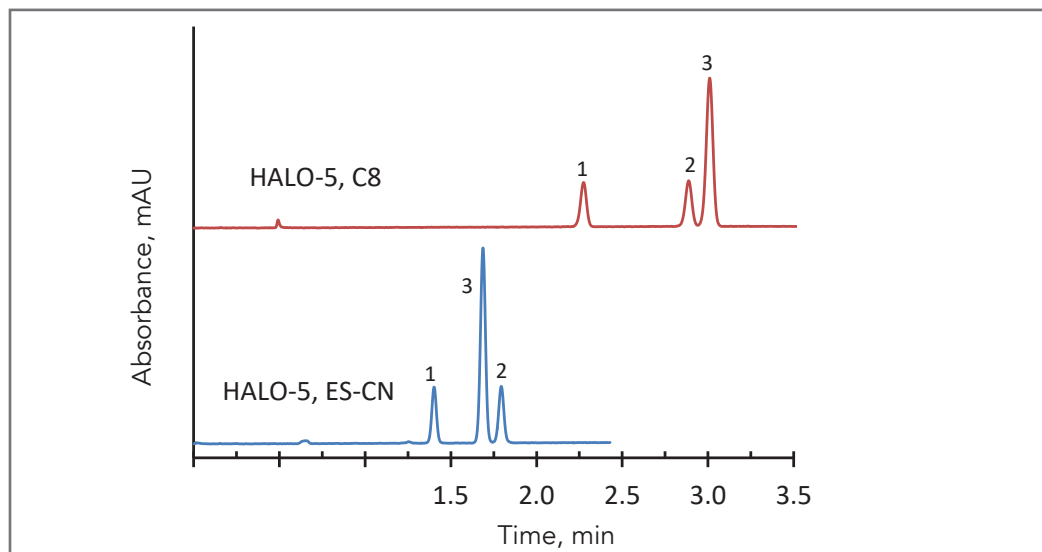




Separation of Stilbenes on HALO® C8 and ES-CN, 5 µm

Application Note 115



PEAK IDENTITIES:

1. trans-Stilbene oxide
2. trans-Stilbene
3. cis-Stilbene

These two HALO® 5 µm phases illustrate the difference in selectivity for the cis- and trans-isomers of these stilbene compounds and the utility of different bonded phases.

TEST CONDITIONS:

Columns:

- 1) HALO 90 Å C8, 5 µm, 4.6 x 50 mm
Part Number: 95814-408
- 2) HALO 90 Å ES-CN, 5.0 µm, 4.6 x 50 mm
Part Number: 95814-404

Mobile Phase:

- A: Water
B: Acetonitrile

Gradient: Time (min)	% B
0.0	40
3.0	60
4.0	60

Flow Rate: 2.0 mL/min

Initial Pressure: 120 bar

Temperature: 30 °C

Detection: UV 230 nm, VWD

Injection Volume: 1.0 µL

Sample Solvent: 50/50 water/acetonitrile

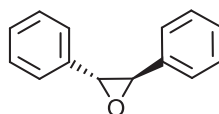
Response Time: 0.02 sec

Flow Cell: 2.5 µL semi-micro

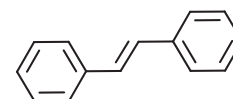
LC System: Shimadzu Prominence UFLC XR

Extra Column Volume: ~14 µL

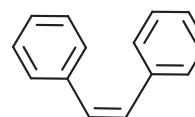
STRUCTURES:



trans-Stilbene Oxide



trans-Stilbene



cis-Stilbene

