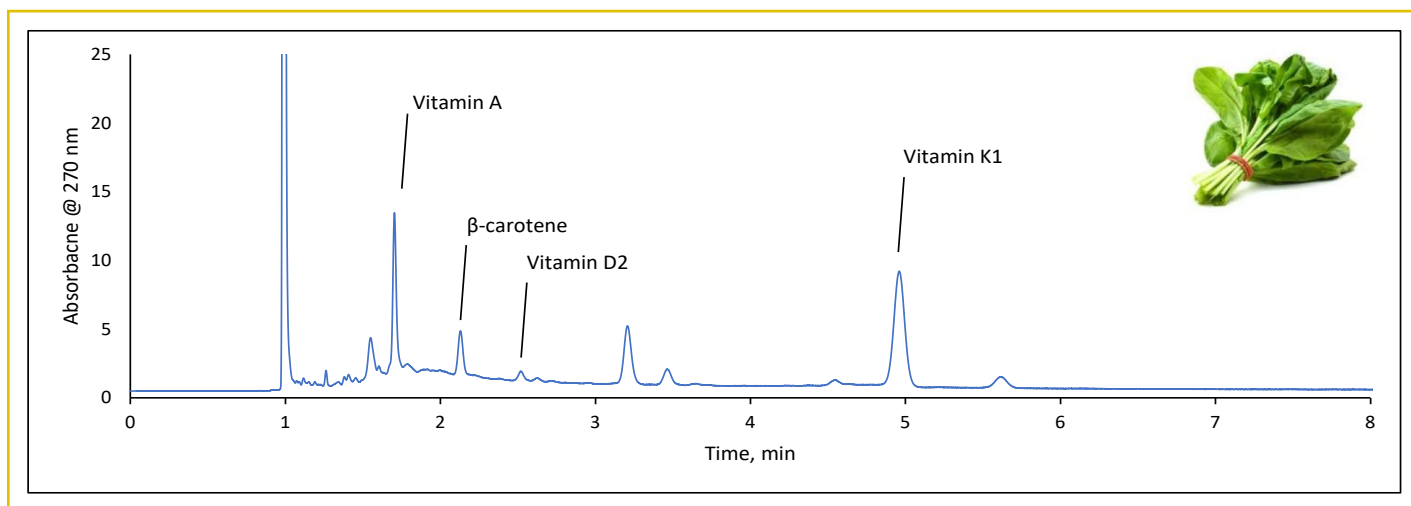




Analysis of Spinach

223-V



TEST CONDITIONS:

Column: HALO 160 Å C30, 2.7 μm , 4.6 x 150 mm
Part Number: 92114-730
Mobile Phase: Methanol
Flow Rate: 1.5 mL/min
Pressure: 265 bar
Temperature: 30 °C
Detection: UV 270 nm
Injection Volume: 1.0 μL
Sample Solvent: Hexane
Response Time: 0.025 sec
Flow Cell: 1 μL
LC System: Shimadzu Nexera X2

PEAK IDENTITIES:

1. Retinyl acetate (Vitamin A)
2. β -carotene
3. Ergocalciferol (Vitamin D2)
4. 2, 3 - trans-phyloquinone (Vitamin K1)

Spinach is common leafy green vegetable found all over the world and is one of the most nutritious to consume. A sample of spinach is dissolved in hexane and analyzed using a HALO® C30 column. Several fat soluble vitamins are found in the sample using isocratic HPLC conditions.

