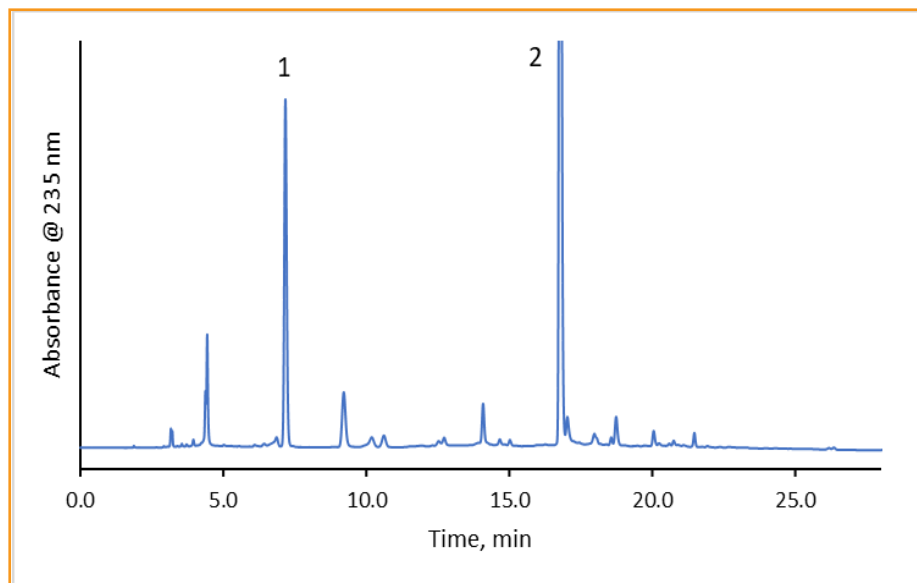




## Cefotaxime Sodium According to Chinese Pharmacopeia (CP)

268-CP



### TEST CONDITIONS:

**Column:** HALO 90 Å C18, 5 µm, 4.6 x 250 mm

**Part Number:** 95814-902

**Mobile Phase A:** 86/14: 0.05 M Phosphate Buffer pH 6.25/ MeOH  
(7.1g anhydrous disodium hydrogen) phosphate to 1000mL)

**Mobile Phase B:** 60/40: 0.05 M Phosphate Buffer pH 6.25/ MeOH  
(7.1g anhydrous disodium hydrogen) phosphate to 1000mL)

Gradient:	Time	%B
	0.0	5
	2.0	25
	8.0	25
	23.0	100
	28.0	100
	33.0	5
	43.0	5

**Flow Rate:** 1.0 mL/min

**Back Pressure:** 189 bar

**Temperature:** 30 °C

**Detection: UV:** 235 nm

**Injection Volume:** 10 µL

**Sample Solvent:** Mobile Phase A

**Data Rate:** 100 Hz

**Response Time:** 0.025 sec.

**Flow Cell:** 1 µL

**LC System:** Shimadzu Nexera X2

### PEAK IDENTITIES

1. Impurity B
2. Cefotaxime

Cefotaxime is used to treat many types of bacterial infections and can be injected or given orally. A Chinese Pharmacopeia (CP) method is used on a HALO® C18 column showing excellent resolution between peaks of interest.

