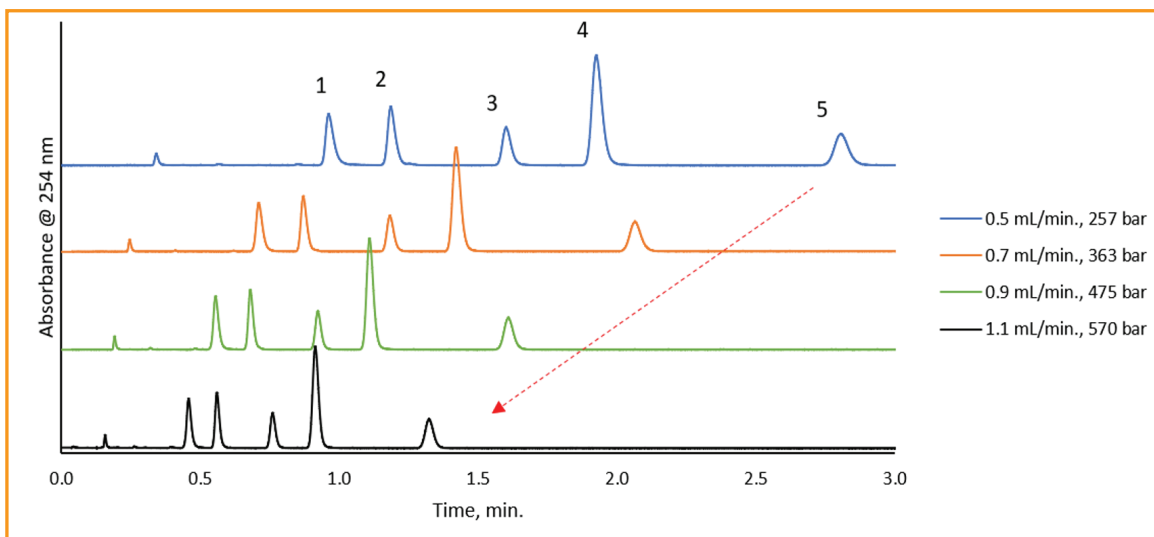




HALO® ELEVATE C18 Demonstrating Advantage of Fused-Core® with Increased Flow Rate



TEST CONDITIONS:

Column: : HALO 120 Å ELV C18, 2.7 μm , 2.1 x 100mm
 Part Numbers: 92272-602
 Mobile Phase A: 10mM Ammonium Bicarbonate, pH 10
 Mobile Phase B: Acetonitrile
 Isocratic: 60 %B
 Temperature: 35 °C
 Sample Solvent: 50/50 Acetonitrile/ Water
 Wavelength: PDA, 254 nm
 Flow Cell: 1 μL
 Data Rate: 100 Hz
 Response Time: 0.025 sec.
 LC System: Shimadzu Nexera X2

PEAK IDENTITIES:

1. Nortriptyline
2. Doxepin
3. Imipramine
4. Amitriptyline
5. Trimipramine

Fused-Core® (superficially porous) particles deliver UHPLC-like efficiency at lower backpressure, enabling higher flow rates and faster HPLC analyses without compromising separation quality. For example, a tricyclic antidepressant separation at pH 10 can be run at more than double the optimal flow rate, maintaining high efficiency while staying below the 600 bar pressure limit.